



USER GUIDE FOR BLACKBERRY

Video from your BlackBerry to your Corporate Website, Blog or Homepage!

With a push of a button, LiveCast Mobile enables video from your BlackBerry to be shared with a global audience or just a single viewer. Video streams are automatically archived on a server, so your friends, colleagues or customers can watch any time it's convenient, and from virtually any device that connects to the internet.

LiveCast Mobile lets you notify your contacts of your content, post the video to blogs, download for editing, add tags to your videos, and track your video streams using dynamic geo-tagging and online maps.

Welcome to a world of new possibilities with your BlackBerry!



Requirements

Data account plus appropriate OS.

Device	Model #	Min. OS Required
Bold 2	9700	5.0.0.330
Bold	9000	4.6 (5.0.0.314 for live)
Storm 2	9550	5.0
Storm	9530	4.6
Tour	9630	4.6
Curve	8520, 8900	4.6 (5.0.0.490 for live)
Curve	8300, 8310, 8320, 8330	4.5
Pearl	8100, 8110, 8120, 8130	4.5
8800	8800, 8820, 8830	4.5
KickStart	8220	4.6

Overview

Installing LiveCast Mobile

- 1.) From your BlackBerry's web browser, go to <http://www.livecast.com/mobile>
- 2.) Click on the Get Software link.
- 3.) Select the appropriate RIM BlackBerry version to install the application.

LiveCast Mobile will now be available in the Downloads folder on your BlackBerry.

INTRODUCTION

LiveCast Mobile can be easily navigated via the menu button or the tab bar.



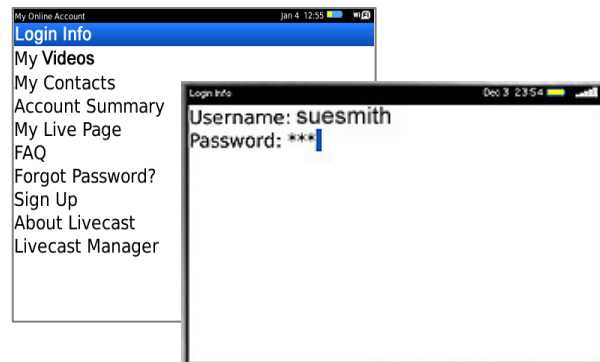
The first time you use LiveCast Mobile, you'll want enter your Login information, then go through each of the other menu options to ensure the default settings are appropriate for you.

LiveCast Mobile remembers the last settings you used, so the next time you can directly start recording without any setup, even if the device has been powered down.

LOGIN INFO



The first time you launch LiveCast Mobile software on your BlackBerry, go to the My Account tab, click LOGIN INFO and enter your username and password.



VIDEO INFO



VIDEO INFO is where you can enter information about your stream before you start recording. You can always add or edit video information online at a later date.

To edit the Video Info, go to your LiveCast account (see My Online Account > Online Archives), choose the video and click Edit.



SETTINGS



SETTINGS is where you specify the default settings for your video.

Stream Options

- Choose Stream and Archive, or Record and Upload. Some devices are not capable of streaming live video and will only show the Record and Upload option.

Mute Audio

- Choose to mute audio.

Camera

- Choose yes for video, No for an audio only stream.

Resolution

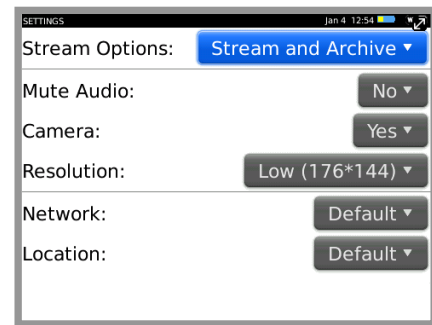
- Select desired resolution. High resolution requires more bandwidth.

Network

- Choose whether you wish to send video via your WiFi or cellular network. BlackBerry's Default network setting will always use WiFi if available, and if not, switches to cellular network. The selected network is reflected in the icon image.

Location

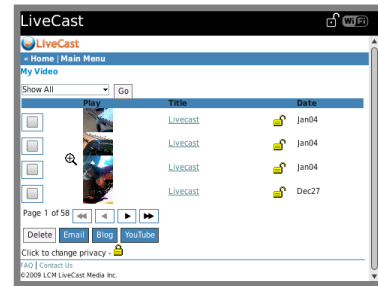
- Select desired location source. If streaming from indoors, GPS may not be available.



MY ONLINE ACCOUNT



My Online Account is where you access and manage your content. These links will launch the BlackBerry's web browser and log you into your online account.



Login Info

- Your username and password are stored here.

My Videos

- View your saved videos, delete selected videos, view the title and other video info, share videos via email or post to YouTube and blogs, and select the privacy setting for your videos.

My Contacts

- Import contact lists, add and delete contacts or groups, assign contacts to groups. This is used mainly for sending your video links.

Account Summary

- View and edit details about yourself and your LiveCast account.

My Live Page

- View your personal page that other viewers see.

FAQ

- Frequently Asked Questions is the first place to look for answers about LiveCasting.

Forgot Password?

- Just can't remember? Then LiveCast will send a new password to the email address listed in Account Summary.

Sign Up

- You'll need a free account before attempting to LiveCast.

About LiveCast

- View the version information.

LiveCast Manager

- View and manage LiveCast sessions.

LIVECASTING

Here's the fun part! There are two basic methods of using LiveCast Mobile on BlackBerry phones – Live (Stream and Archive) and On-Demand (Record and Upload). Live streaming is only available on select models with OS 5 and above.

NOTE: Some carriers require the user to manually set the APN in order to allow data to pass through. To do this, on the BlackBerry, go to Settings > Options > Advanced > TCP/IP > and you should enable the APN and input the APN address. Your carrier will have the appropriate APN address(es) you will need.

Live Streaming

The first time you use LiveCast Mobile for LIVE streaming on BlackBerry, two windows will pop up, asking to give the permission for LIVE streaming. Select "Don't ask again" and click "Allow".

Click the Start button to start your live stream.

This live stream can be viewed on your LiveCast Page at:

<http://www.livecast.com/<USERNAME>>

or can be viewed on a mobile phone/PDA here:

<http://www.livecast.com/m/<USERNAME>>

The live stream can also be viewed in all LiveCast Lightning products with 1 second latency.

Click the Return key to stop the live stream.



Record and Upload

After the first time you set up LiveCast Mobile with your log-in information, you can just click the trackball to go directly to the preview screen. If you're ready to go, click the trackball again and you're LiveCasting!

A red light will appear on your BlackBerry during recording.



Pausing and Stopping

Pressing the trackball again puts the recording into Pause mode. Clicking the record button again to continue recording. Pressing the Stop button stops the recording and automatically starts transferring your video to your online account.

You can now start a new recording as the transfer is in progress. After completing the transfer, the video may be deleted from your BlackBerry (see Setting).



Tip: To stop the recording and start the transfer in a single click, press the Return button during the recording. To stop the transfer (upload) at any time press the Return button. When the transfer resumes, it will continue from where it was stopped.

Location, Location, Location

When you stop the recording, Your GPS co-ordinates will be saved and transferred with the video. These co-ordinates are displayed corresponding to the appropriate video on the map on your personal page.

NOTE: LiveCast Mobile utilizes the BlackBerry built-in video recorder in Record and Upload mode. For more detailed instruction on the BlackBerry video recorder, consult your BlackBerry manual

Your LiveCast Page

Everyone with a LiveCast account is provided a personal page to host videos they shoot. Simply send the URL address to your contacts or it's provided in an email or SMS message when you notify them with the Share feature.

Log in to your online account, and click on the LiveCast page links to customize your page.

View your LiveCast page here:

<http://www.livecast.com/<USERNAME>>

or can be viewed on a mobile phone/PDA here:

<http://www.livecast.com/m/<USERNAME>>

Latency is under 1 second average when viewed using Lightning products. When using a browser, latency ranges from 5 seconds to 25 seconds, depending on media player and network congestion.

NOTE: If you accessing a server other than the public LiveCast server (<http://www.livecast.com>), please alter the links in this guide to reflect the appropriate server.



Contact: support@livecast.com